



SERVICE MANUAL

INSTRUCTIONS FOR CUSTOMERS DURING INSTALLATION

The end users should be informed about the below subjects

1. General information (general specifications; energy class, etc.)
2. Separating the laundry according to colour, type and properties.
3. Selecting the proper washing program and detergent/softener.
4. Usage of temperature and spinning adjustment knobs.
5. Maximum dry laundry weight according to programs.
6. Information about optional buttons.
7. Starting the program.
8. Pausing the program.
9. Cancelling the program.
10. Activating and deactivating the child lock. It should also be informed that the child lock will not be deactivated itself unless manual operation is done.
11. Half-load detection system.
12. Unbalanced-load control system.
13. Information about door lock (Door lock will be deactivated 2 minutes after program end and it will not be activated during drain phase until beginning of program.)
14. **The end-users should refer to user manual at first in case of failure.**
15. Information about adjustable feet in case of transport.
16. Usage of detergent drawer, maintenance and cleaning.
17. Maintenance and cleaning of drain pump filter, water entry hose filter and valve filter.
18. Information about the height of drain hose.
19. Information about not deforming the water entry hose and drain hose.
20. Information about the water levels.
21. Information about transport screws in case of transport.

It should be strongly recommended that end-users read the user manual and refer to user manual in case of failure.

Instructions for repair:

1. Check the environmental conditions (water pressure, voltage, current, ground, electricity and water network)
2. Check if the end-user is operating the product correctly or not. (child lock deactivation, resetting, etc.)
3. Apply autotest program.
4. Refer to failure codes flowcharts in case failure code is displayed on control panel.
5. Check the electrical connections.
6. Check the cable and hose connections.

Moving and Installing:

Removal Of Transportation Screws

- Transportation screws, which are located at the back side of the machine, **must** be removed before running the machine.
- Loosen the screws by turning them anticlockwise with a suitable spanner. (DIAGRAM-1)
- Pull out the screws and rubber washers .(DIAGRAM-2)
- The holes where the transport screws have been removed should be covered with the plastic transport caps found in the accessories bag. (DIAGRAM-3)
- The transportation screws that have been removed from the machine must be re-used in any future transporting of the machine.



DIAGRAM-1

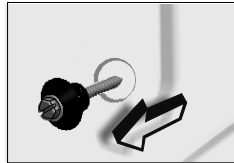


DIAGRAM-2

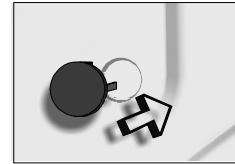
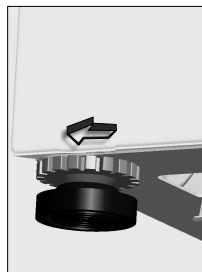


DIAGRAM-3

Foot Adjustment

- Do not install machine on rugs or similar surfaces.
- For machine to work silently and without any vibration, it should be installed on a flat, non-slippery firm surface. Any suspended floor must be suitably strengthened.
- You can adjust the level of machine using its feet.
- First, loosen the plastic adjustment nut away from the cabinet base.
- Change the level by adjusting the feet upwards or downwards.
- After level has been reached, tighten the plastic adjustment nut again by rotating it upwards against the base of the cabinet.
- Never put cartons, wooden blocks or similar materials under the machine to balance irregularities of the floor.



Electrical Connection

- Washing machine requires a 50Hz supply of 220-240Volts.
- A special earthed plug has been attached to the supply cord of washing machine. This plug must be fitted to an earthed socket. The fuse value fitted to this plug should be 13 amps. If you have any doubts about electrical supply, consult a qualified electrician.
- **THIS APPLIANCE MUST BE EARTHED.**
- **Insert the machine's plug to a grounded socket which you can easily reach.**

Water Supply Connection

- machine is supplied with a single (cold) water inlet.
- To prevent leakage from the connection joints, a rubber washer is included in the hose packing. Fit this washer at the end of water inlet hose on the tap side.
- Connect the hose to the water inlet valve. Tighten the plastic connector by hand. Please call a qualified plumber if you are unsure about this.
- Water pressure of 0,1-1 MPa from tap will enable machine to work more efficiently.(0,1 MPa pressure means water flow of more than 8 litres in 1 minute from a fully opened tap)
- After connection is complete, check for leakage by turning on tap completely.
- Make sure that water inlet hoses can not become folded, damaged, stretched or crushed when the washing machine is in its final position.
- Mount the water inlet hose to a 3/4" threaded water tap.

Drain Connection

- Make sure that water inlet hoses are not folded, twisted, crushed or stretched.
- The drain hose should be mounted at a minimum height of 60 cm, and a maximum height of 100 cm from the floor.
- The end of the drain hose can be connected directly to a drainage stand-pipe or alternatively to a specific connection point designed for that purpose on the waste outlet of a sink unit.
- Do not extend the drain hose or guarantee will be invalidated.

Detergent Box Group :

MAIN

VALVE 1



SOFTENER

PREWASH

VALVE 2

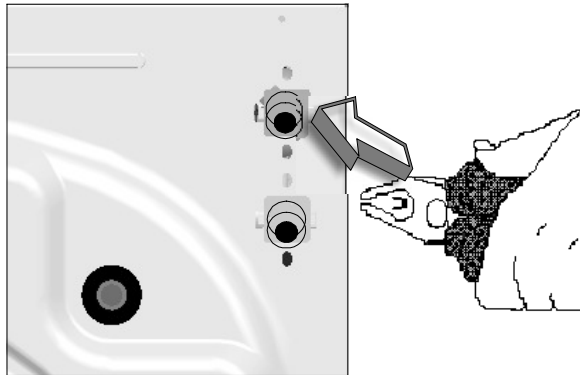
PREWASH = WATER ENTRY VALVE 1
MAIN = WATER ENTRY VALVE 2
SOFTENER = WATER ENTRY VALVE 1 + VALVE 2

Maintenance:

Water Inlet Filters

On the tap part of machine's water inlet hose and at the ends of water inlet valves, there are filters to prevent entrance of the dirt and foreign materials in the water to the machine. If the machine is unable to receive sufficient water although water tap is opened, these filters should be cleaned.

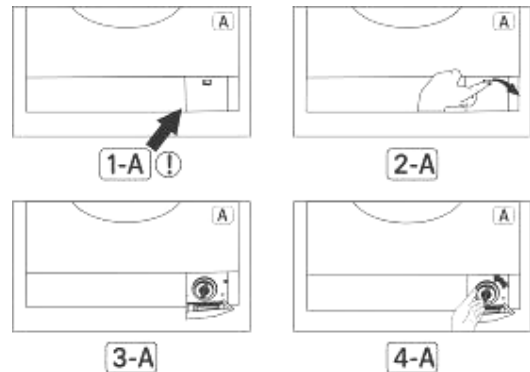
- Remove the water inlet hose.
- Remove the filter found on the water inlet valve using pliers and wash thoroughly with a brush.
- Clean the filters of the water inlet hoses located on the tap side by removing manually together with the washer.
- After you clean the filters, you can fit them the same way as you have removed them.



Pump Filter

The pump filter system elongates the life of pump, which is used to drain the dirty water. It prevents lint to enter the pump. Cleaning of pump filter in every 2-3 months is recommended. To clean pump filter:

- Open the kickplate's cover, by pulling the handle.
- Before opening the filter cover, place a cup in front of the filter cover to prevent flow of the remaining water in the machine.
- Loosen the filter cover by rotating it counter clockwise and drain the water.
- Remove the foreign materials from the filter.
- Check for the rotation of the pump manually.
- After you have cleaned the pump, fit the filter cover by rotating clockwise.
- Put the kickplate cover into the place.
- Do not forget that if you do not fit in the filter cover properly, it will leak water.



Detergent Drawer

Detergents may form a sediment in detergent drawer or in the housing of the detergent drawer over time. To clean this sediment, you must remove the detergent drawer. To pull out the detergent drawer:

- Pull the detergent drawer to the end. (DIAGRAM-1)
- Press the blue siphon plug in the drawer, and continue to pull the drawer until it is removed. (DIAGRAM-2)
- Wash with an old toothbrush and plenty of water.
- Ensure that any leftover detergent does not drop into machine.
- After drying the detergent drawer replace it in the housing in the same way that you pulled it out.

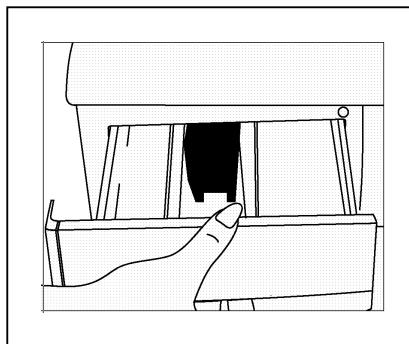


DIAGRAM-1

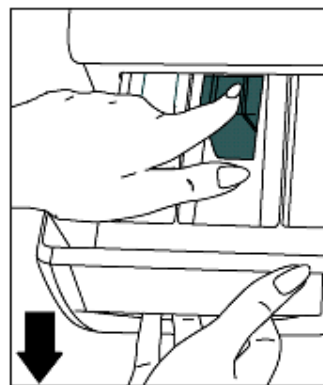
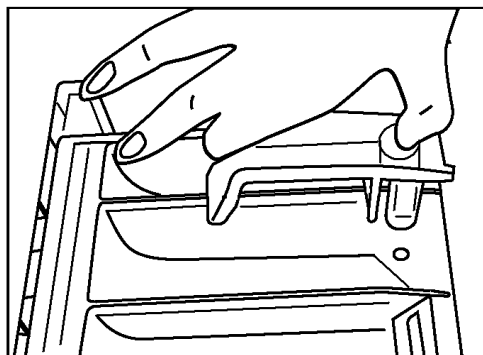


DIAGRAM-2

Siphon Plug

Pull out the detergent drawer. Remove the siphon plug and clean the residues of the softener thoroughly. Fit the cleaned siphon plug in its location. Check it is fitted properly.



ENERGY LABEL

LOGO:XXXXXX
MODEL:XXXXX

ENERGY PERFORMANCE

A

ENERGY CONSUMPTION

5 KG : 0,95 kWh/program
6 KG : 1,14 kWh/program
7 KG : 1,33 kWh/program
7,5 KG : 1,42 kWh/program

WASHING PERFORMANCE

A

SPINNING PERFORMANCE

600 RPM : E
800 RPM : D
1000 RPM : C
1200 RPM : B
1400 RPM : B
1600 RPM : A

CAPACITY

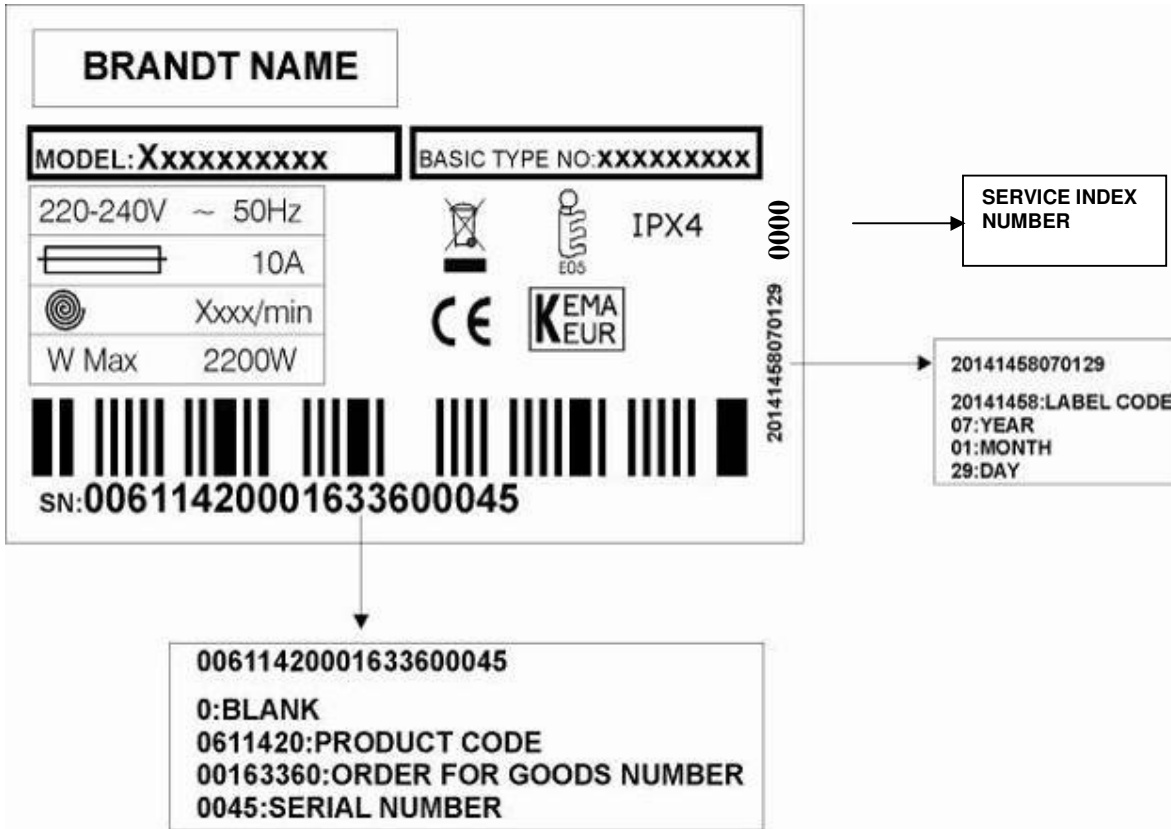
5 KG
6 KG
7 KG
7,5 KG

WATER CONSUMPTION

5 KG : 43 lt
6 KG : 49 lt
7 KG : 62 lt
7,5 KG : 63 lt

Energy		Washing Machine
Manufacturer	LOGO	
Model	XXXXX	
More efficient		
Less efficient	<p>Energy consumption kWh/program (Based on standart test made at 60 °C cotton wash program) <small>Actual consumption will depend on how the appliance is used and where it is located.</small></p>	
Washing performance	X.XX	
A: High B: Low	A B C D E F G	
Spinning performance	A B C D E F G	
A: High B: Low	XXXX	
Spin speed (rpm)	XXXX	
Capacity (cotton) kg	XX	
Water consumption lt	XX	
Loud (Dbre 1 pW)	Washing	
	Spin	
Further information is contained in product brochures.		
Norm EN 60456		

NAME PLATE



CHILD LOCK MANUAL

Press the first and second function button for 3-4 seconds to activate child lock.



Wash, rinse and spin LEDs will flash for 2 seconds.



Wash, rinse and spin LEDs will flash for 2 seconds, if any button is pressed on the control panel.



Press the first and second function button for 3-4 seconds to inactivate child lock.



End LED will be on for 2 seconds.



AUTOTEST MANUAL

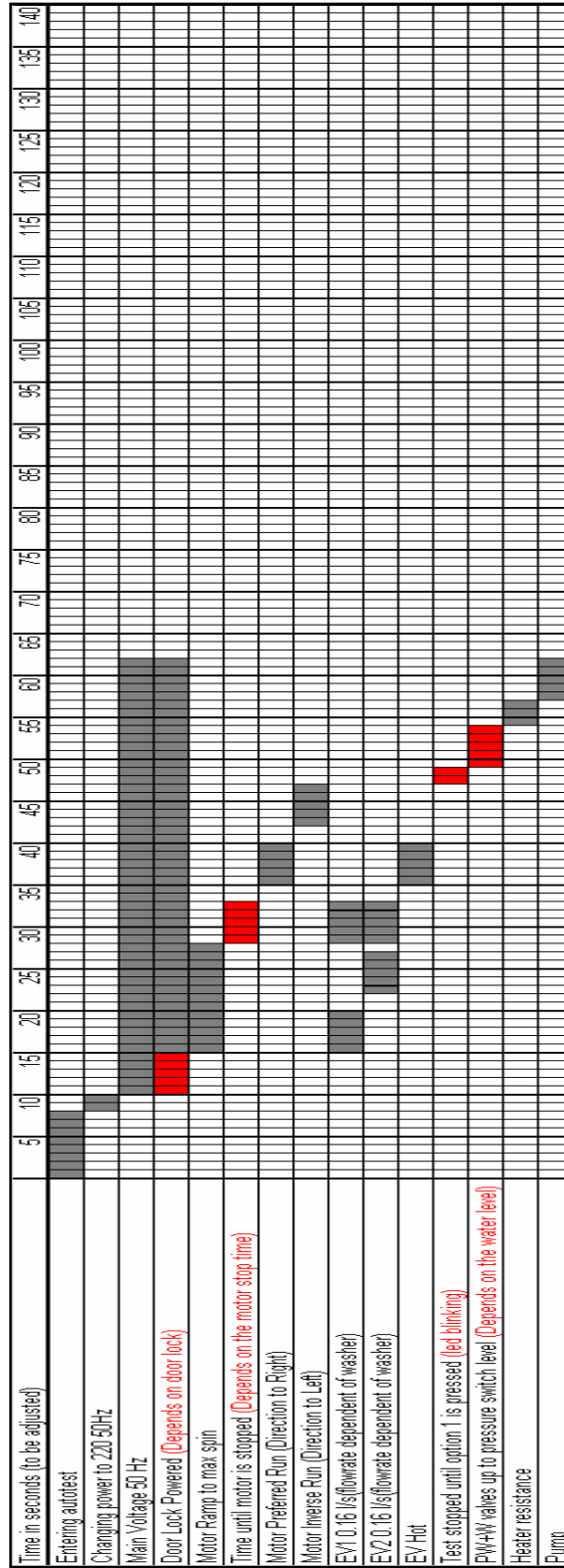
1) Press the 1st Function button when the Program knob is at the STOP position.



2) While pressing 1st Function button. Change the position of the knob to 1.



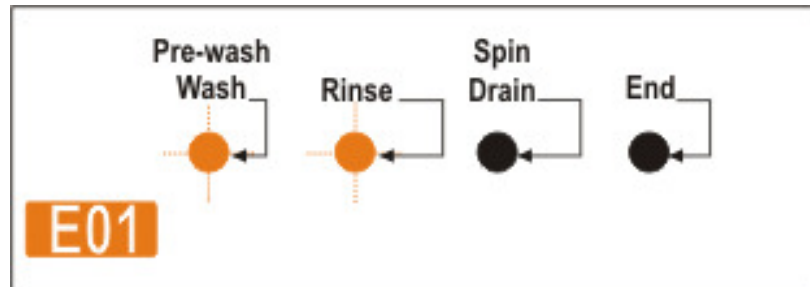
Auto Test Chart



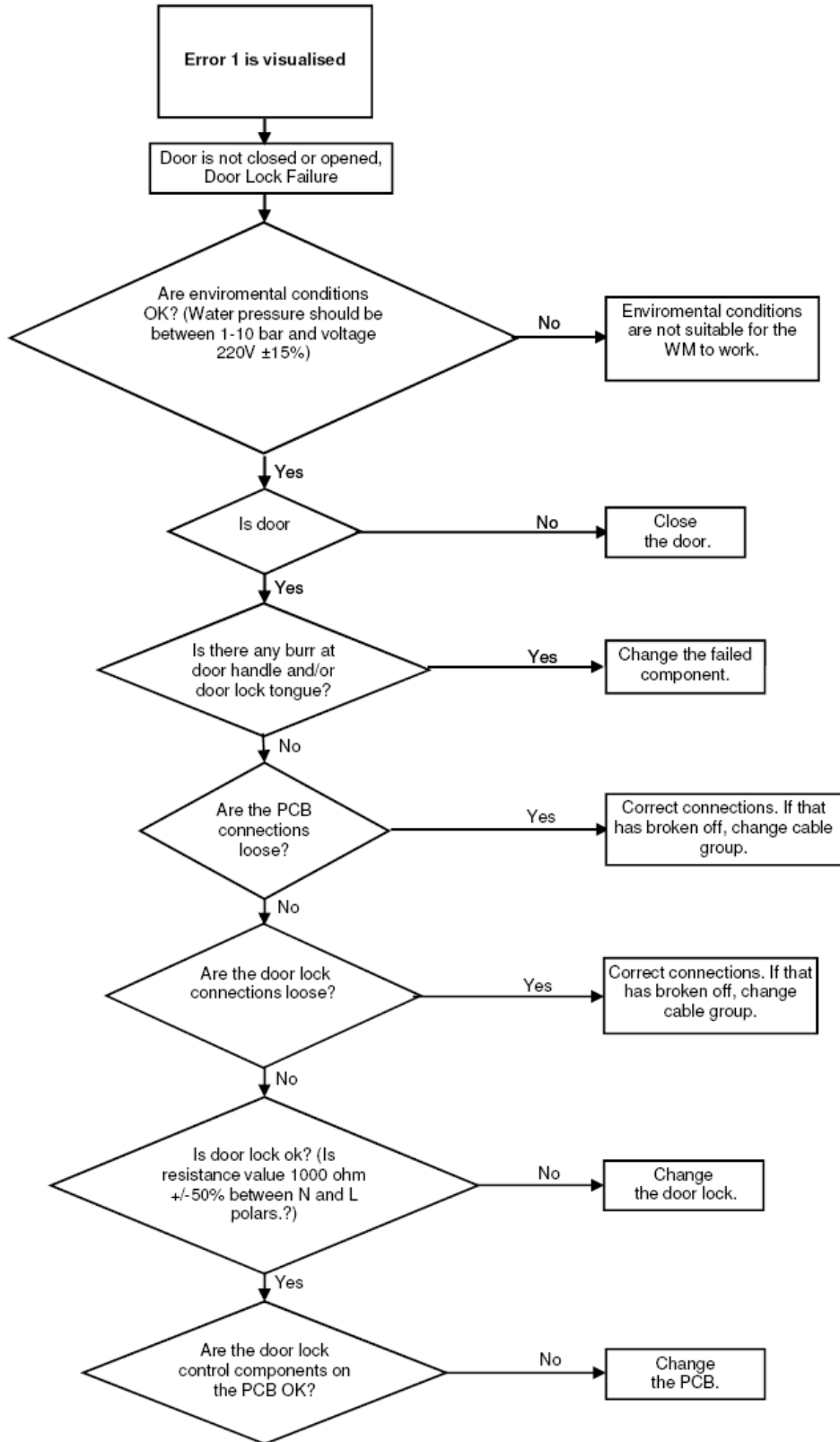
Failure Codes

FAILURE CODE 1

A- Failure indicator situations

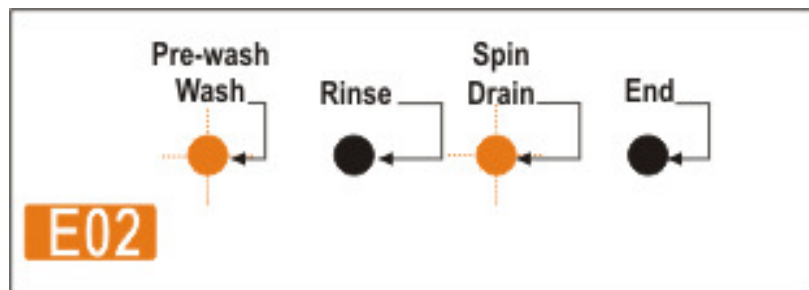


C- Error flowcharts

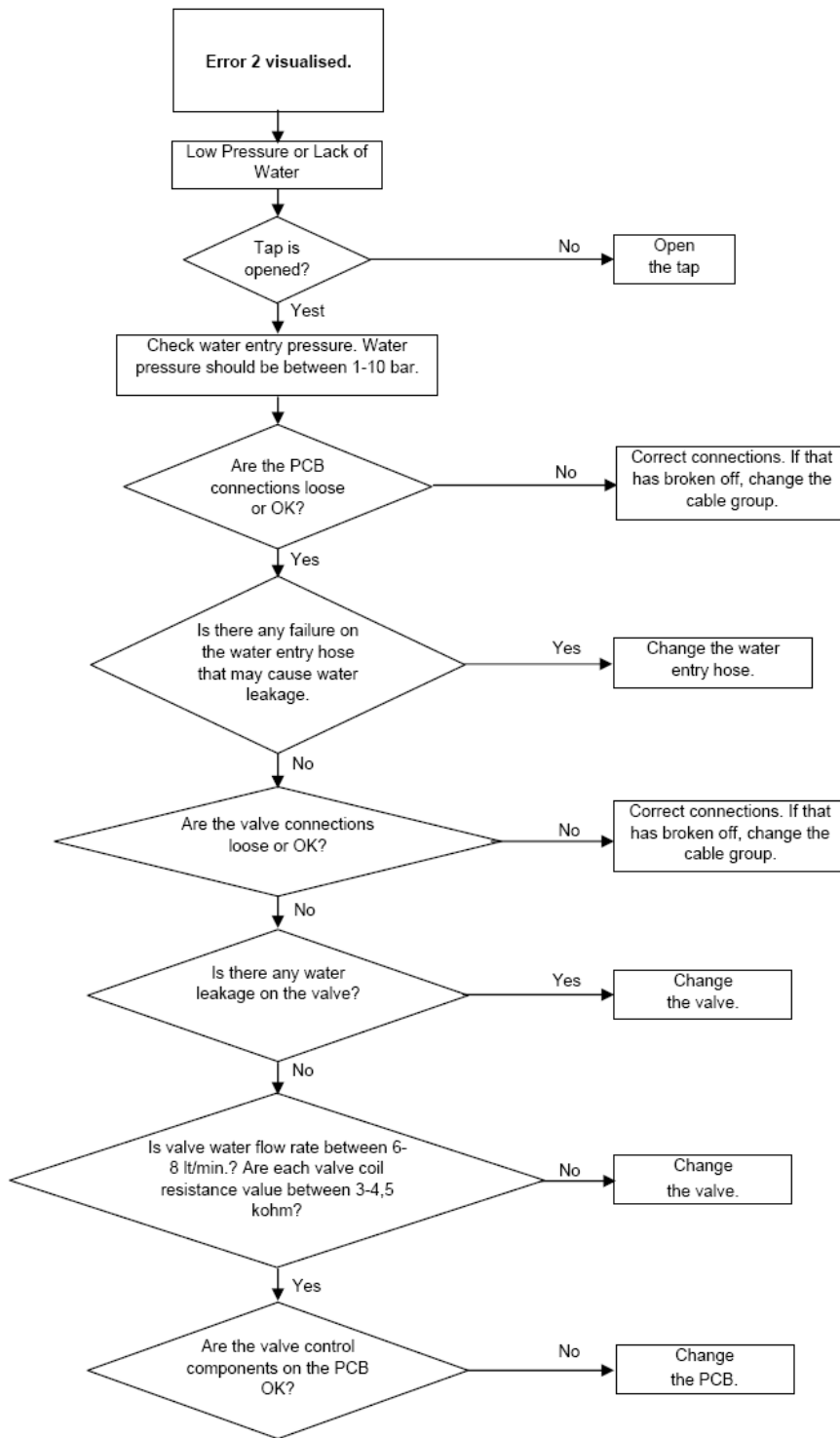


FAILURE CODE 2

A- Failure indicator situations

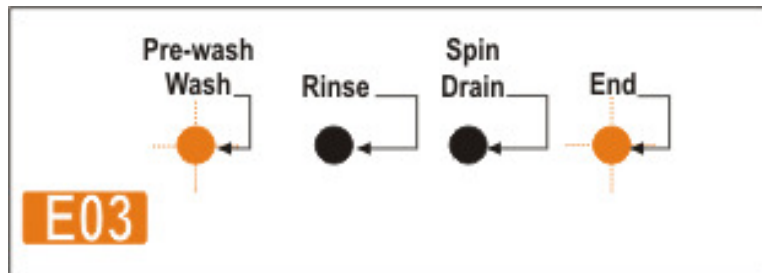


C- Error flowcharts

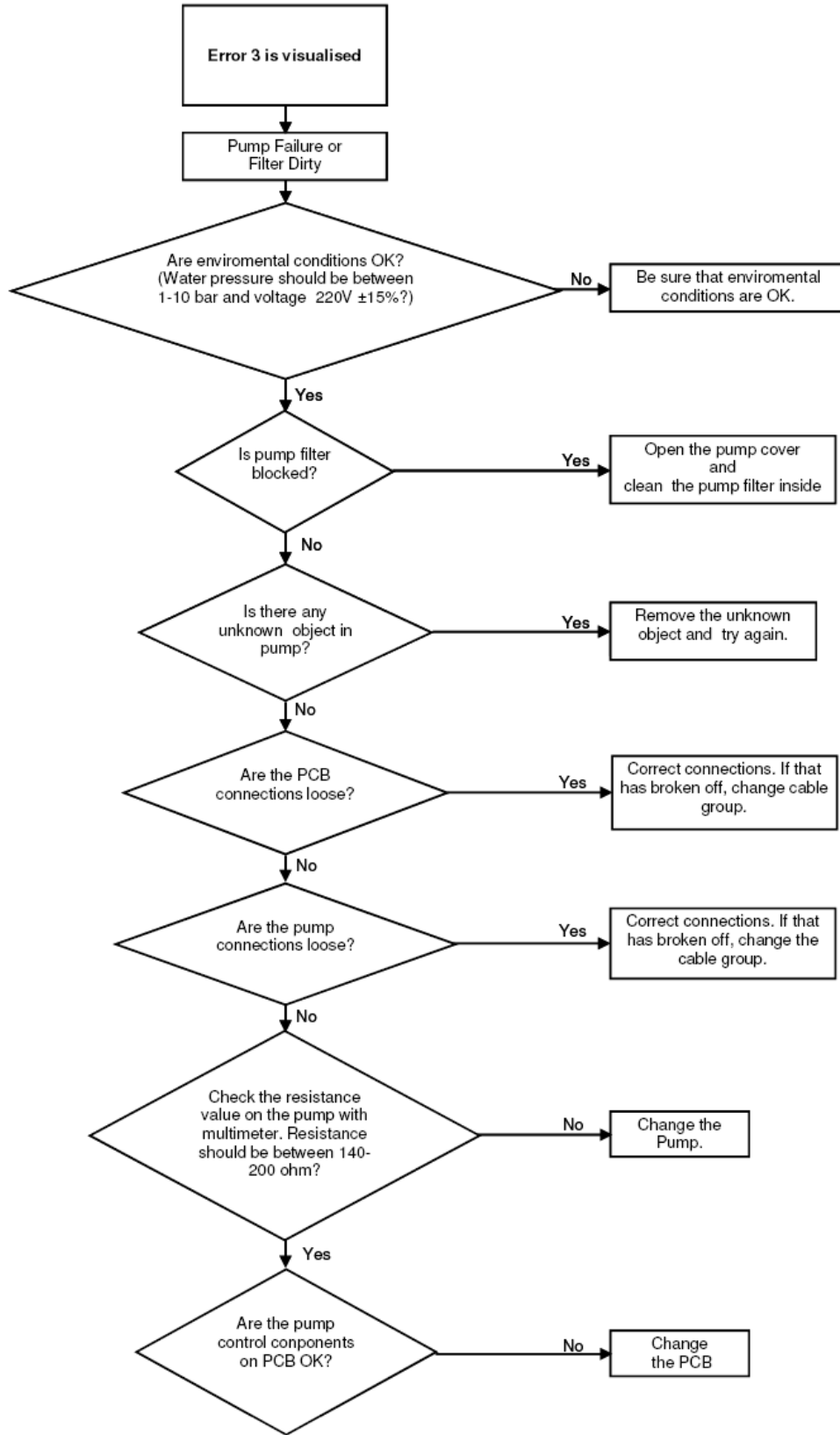


FAILURE CODE 3

A- Failure indicator situations

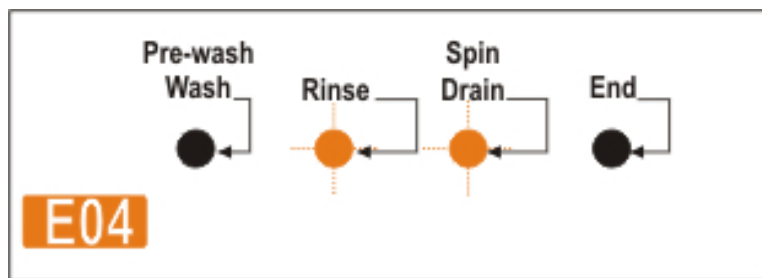


C- Error flowcharts

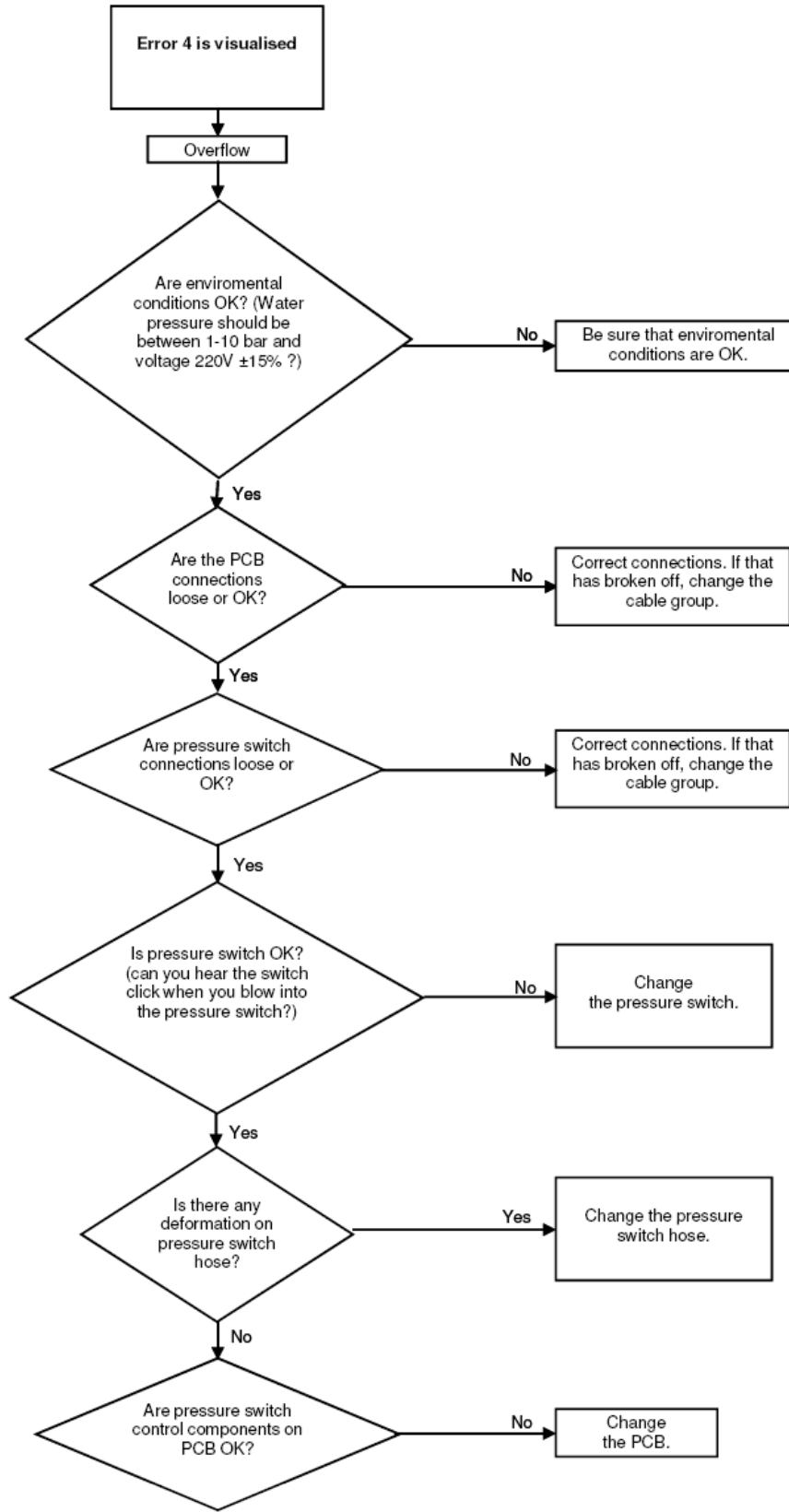


FAILURE CODE 4

A- Failure indicator situations

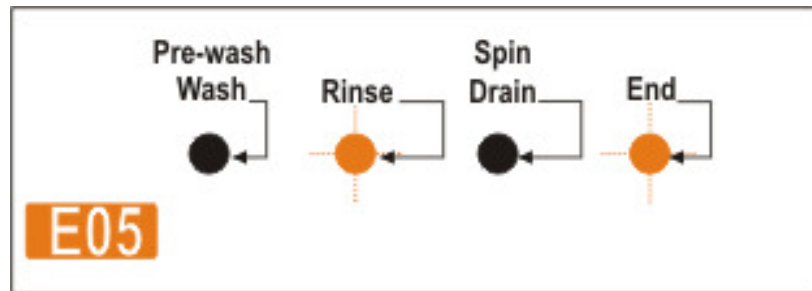


C- Error flowcharts

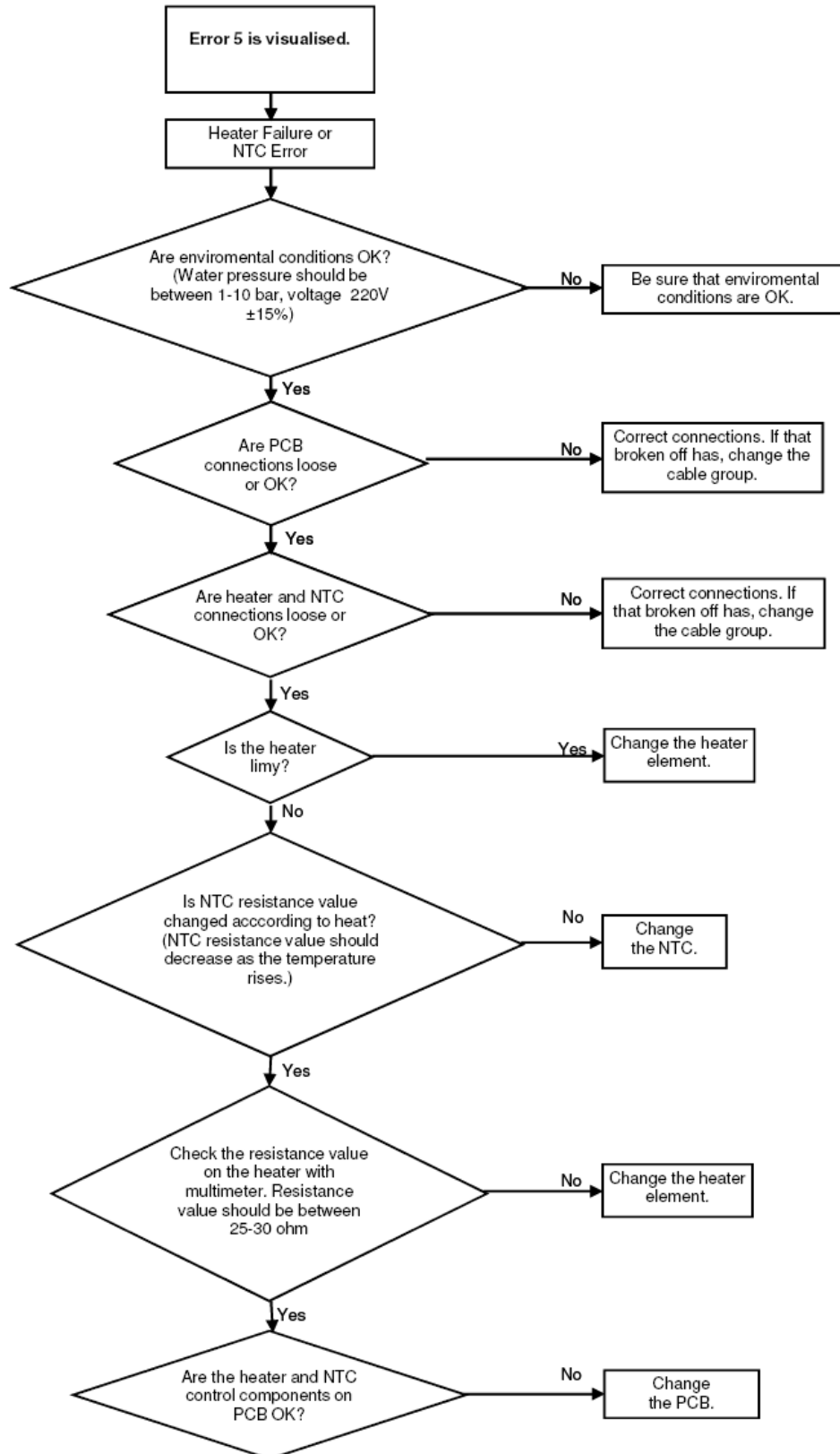


FAILURE CODE 5

B- Failure indicator situations

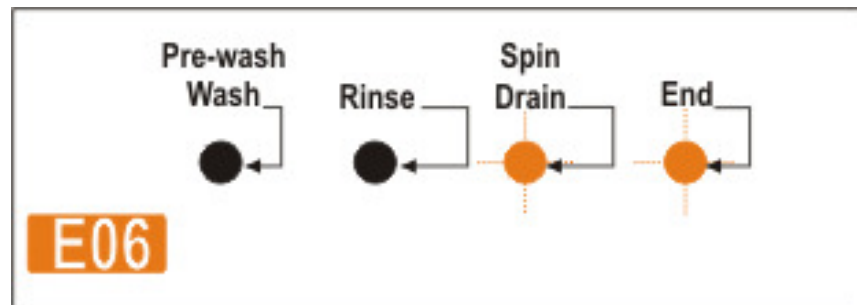


C- Error flowcharts

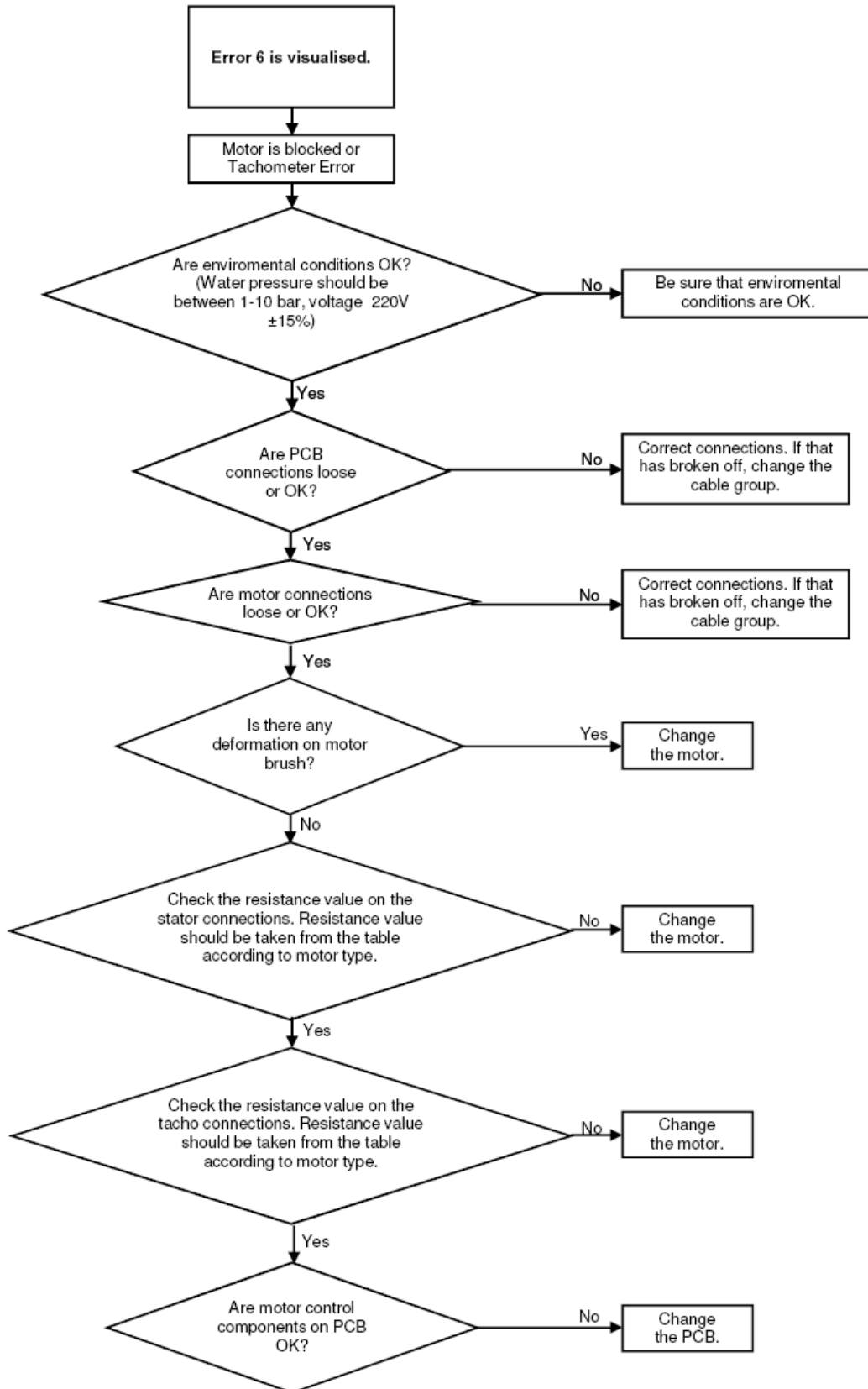


FAILURE CODE 6

A- Failure indicator situations

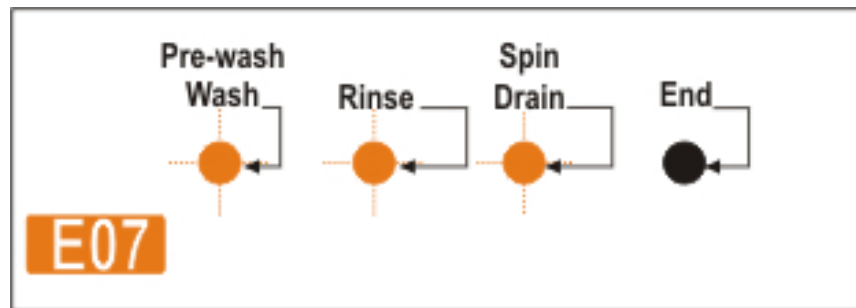


C- Error flowcharts

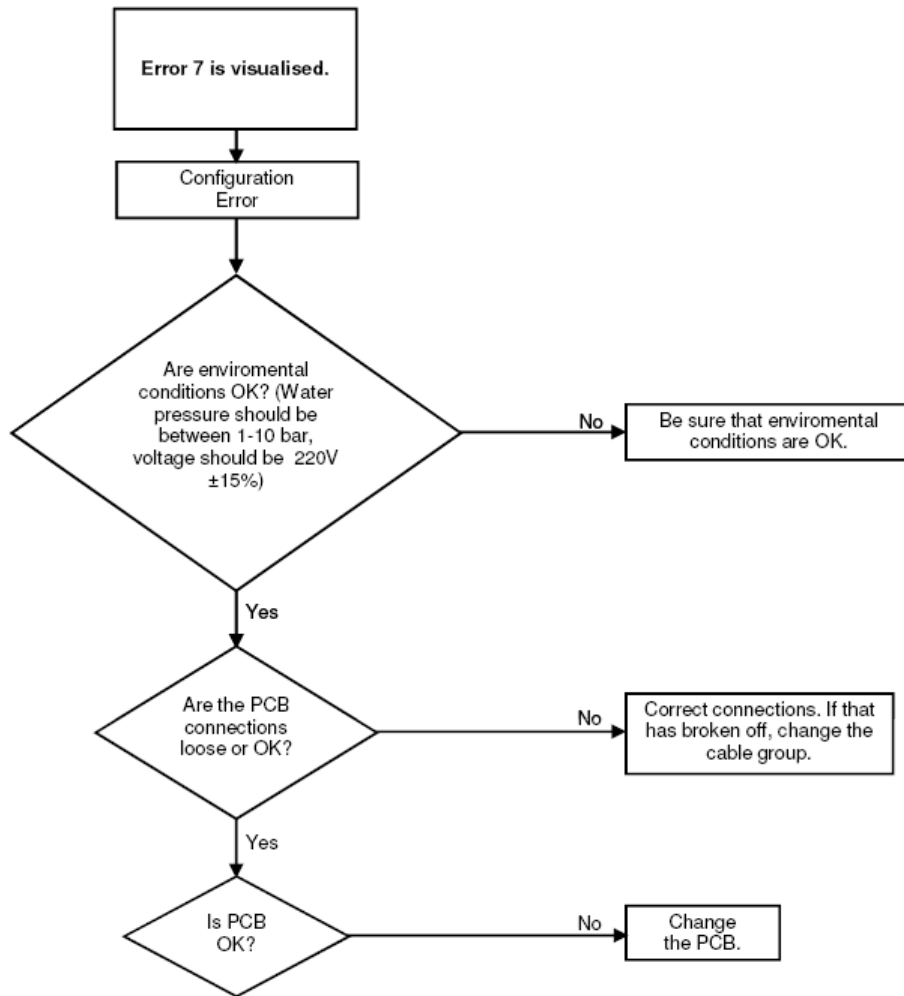


FAILURE CODE 7

A- Failure indicator situations

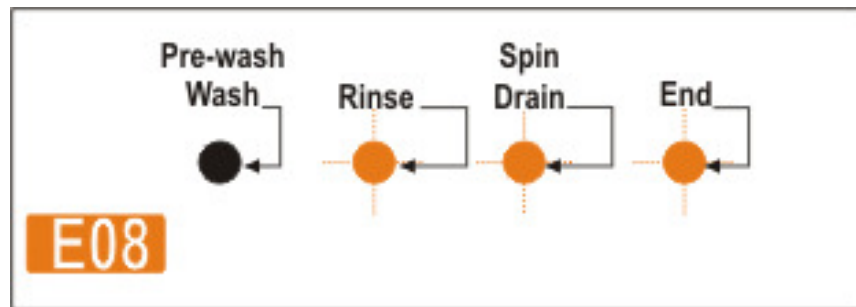


C- Error flowcharts

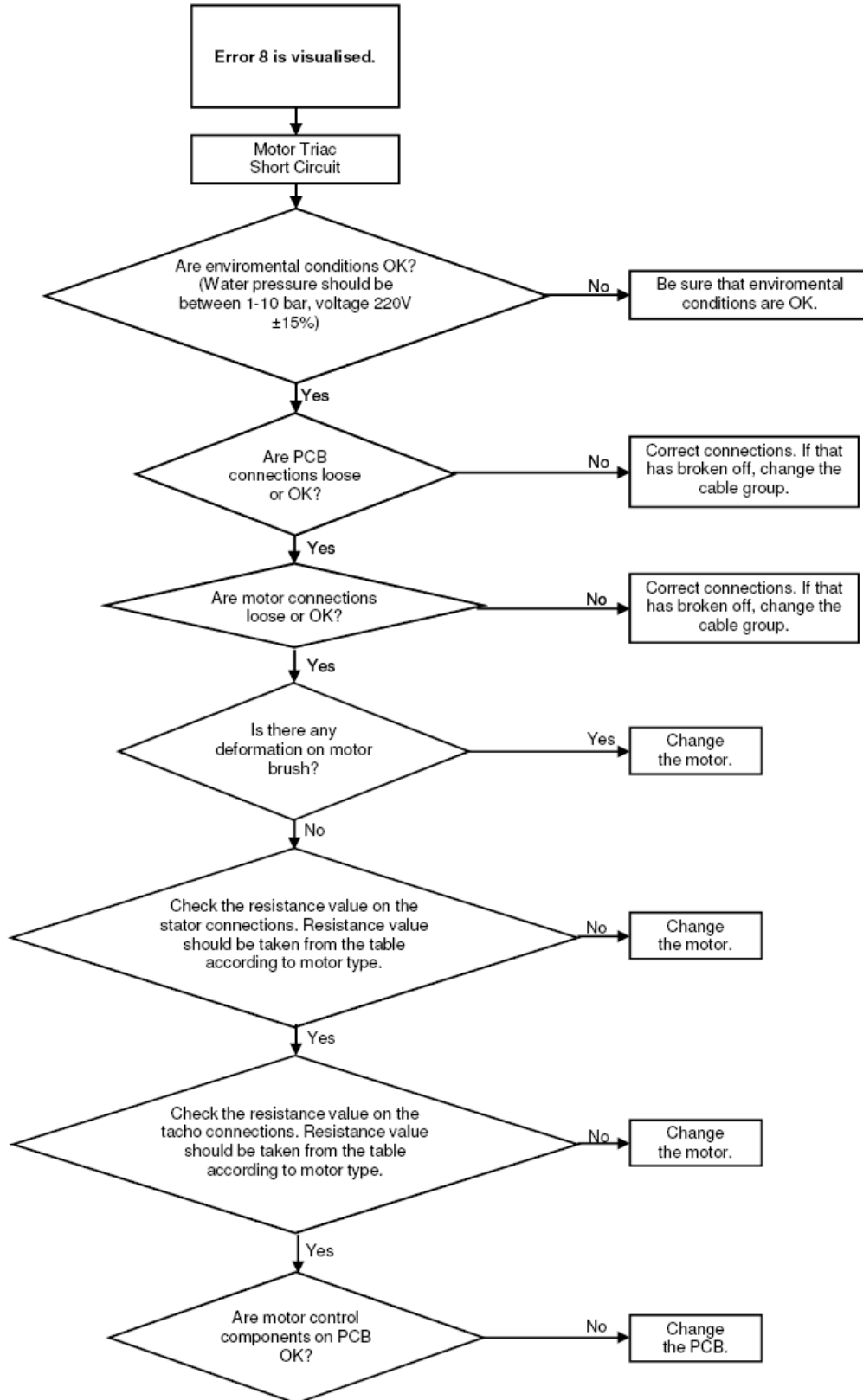


FAILURE CODE 8

A- Failure indicator situations

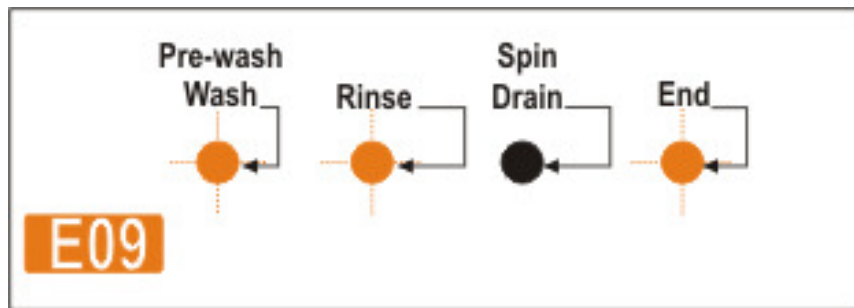


C- Error flowcharts

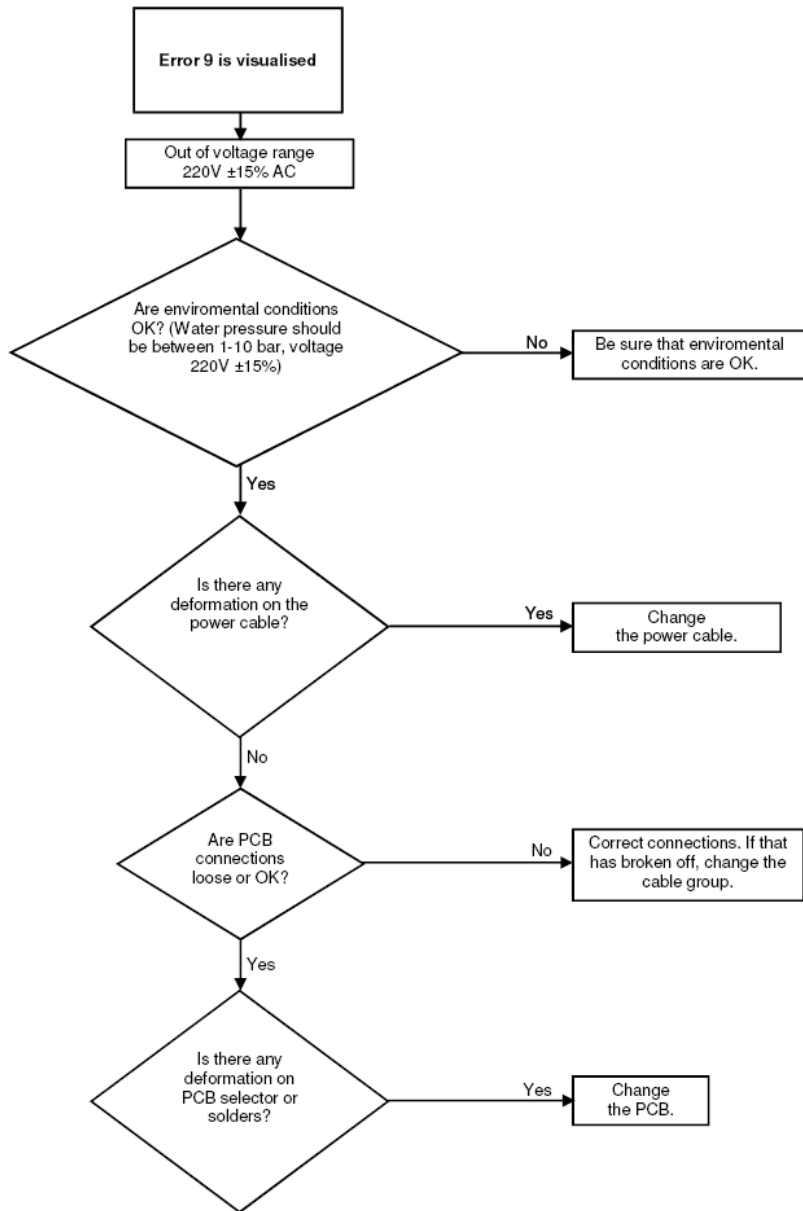


FAILURE CODE 9

B- Failure indicator situations



C- Error flowcharts



Component specifications

DOOR LOCK

Door lock is activated at the beginning of the program in order to prevent the door from opening. It can be unlocked approximately after 2 minutes of the program end. This time delay is caused by the PTC which is assembled in the door lock.

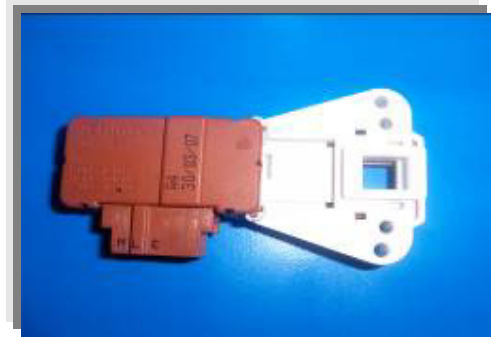


Figure 1. Door lock

Technical features :

Lock Time (20 °C)	2" – 6"
Unlock Time (20 °C)	35" – 75"
Nominal voltage	250 V
Nominal current	16 (4) A

Checking of component :

Check the resistance value on the component with multimeter as shown in Figure2.

Resistance value on the PTC should be $1000 \Omega \pm 50\%$.

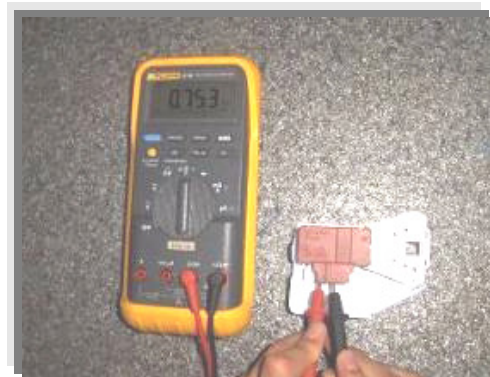


Figure 2. Checking the component

DRAIN PUMP

Drain pump is both a mechanical and electrical component which is used to drain water inside the washing machine. It has a synchronous motor inside. For better performance maintenance, pump filter should be cleaned regularly.



Figure 3. Drain pump

Technical features :

Nominal voltage	230 V
Nominal current	0.2 A
Nominal power	30 W
Frequency	50 Hz
Resistor (coil)	170 Ω ($\pm 7\%$)
Water flow:	18 l/min(to 1 m height)
Thermal protector	YES

Checking of component :

Check the resistance value on the component with multimeter as shown in Figure 4.

Resistance value should be between 140- 200 Ohm



Figure 4. Checking the component

NTC

Component which sends signals to PCB about the water temperature inside the tub. The Resistance (Ohm) value of the NTC decreases as the temperature increases.



Figure 5. NTC

Techinal Feature :

Tem (°C)	R nom (Ω)	R min (Ω)□	R max (Ω)□	Δ R (+/- %)
-10,00	58.722,00	54.874,00	62.570,00	6,60
- 5,00	45.778,00	42.961,00	48.596,00	6,20
0,00	35.975,00	33.900,00	38.050,00	5,80
5,00	28.516,00	26.977,00	30.055,00	5,40
10,00	22.763,00	21.616,00	23.910,00	5,00
15,00	18.279,00	17.421,00	19.137,00	4,70
20,00	14.772,00	14.128,00	15.417,00	4,40
25,00	11.981,00	11.497,00	12.464,00	4,00
30,00	9.786,00	9.421,00	10.150,00	3,70
35,00	8.047,00	7.772,00	8.322,00	3,40
40,00	6.653,00	6.444,00	6.861,00	3,10
45,00	5.523,00	5.365,00	5.680,00	2,80
50,00	4.608,00	4.489,00	4.726,00	2,60
55,00	3.856,00	3.767,00	3.945,00	2,30
60,00	3.243,00	3.178,00	3.308,00	2,00
65,00	2.744,00	2.681,00	2.808,00	2,30
70,00	2.332,00	2.273,00	2.392,00	2,50
75,00	1.990,00	1.934,00	2.045,00	2,80
80,00	1.704,00	1.653,00	1.755,00	3,00
85,00	1.464,00	1.416,00	1.511,00	3,20
90,00	1.262,00	1.218,00	1.305,00	3,40
95,00	1.093,00	1.053,00	1.133,00	3,70
100,00	949,90	913,20	986,60	3,90

Table 1 .NTC Tempure – Resistance Values

Checking of component :

Check the resistance value on the component with multimeter as shown in Figure 6.



Figure 6. Checking the component

EMI FILTER

EMI Filter Functions:

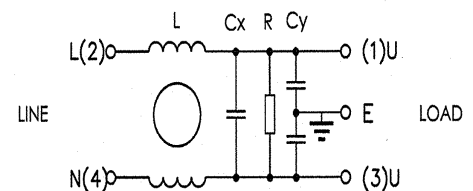
1. To adjust the frequency changes to the value of 50-60 Hz which is the nominal frequency for the components.
2. To prevent harmonic frequency feedback sent by motor , resistance to the the network.



Figure 7. EMI Filter

Technical features :

Rated Voltage	250 V
Rated Current	16 A
Cx	0,47 μ F (\pm 20%)
Cy	2 x 25 nF (\pm 20%)
L	2 x 1 mH (+%50,-%30)
R	680 k Ω (\pm 10%)



Checking of component :

Check the resistance value on the component with multimeter as shown in Figure 8.
Resistance value on the EMI filter (between L-N polars) should be 680 kohm (\pm 10%).

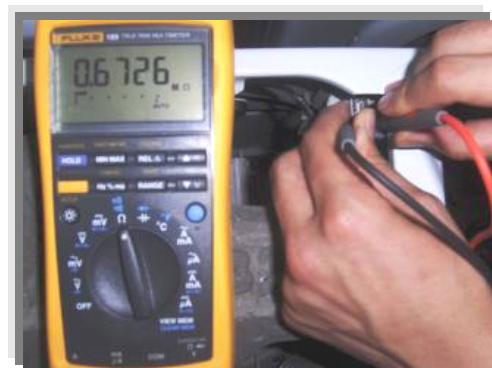


Figure 8. Checking the component

PRESSURE SWITCH

Voltage : 250 V
Amper : 16 A



Figure 9. Pressure switch

Pressure switch is the component which regulates the water intake according to the water levels set inside. The component is operated by PCB card. It has four connections : *Reset, set, common, overflow.*

Technical features :

The component has three levels. When the component is at reset level, the machine begins to take water inside. When the component is at set level, the machine stops to take water inside by communicating with PCB card. The third level, overflow level, is set to prevent taking excessive water(overflow) into the machine.

The pressure switches that have different water set levels have different water intake values accordingly.

Checking of component :

- 1) Blow into the pressure switch hose or pressure switch entry. Be sure that you hear the switch click.
- 2) Turn the program adjustment knob *rinse* mode and let the machine take water in. Be sure that you hear the switch click or the machine stops to take water inside after a while. (Figure 10.)



Figure 10. Program knob

RESISTANCE

Heating element (Resistance) is a component which is designed to regulate temperature of water inside the drum. It has three connections: Phase, notral and ground connections.



Figure 11. Resistance

Technical features :

Kind of heating	Tubular heating element with NTC – sensor
Nominal voltage	230 V
Nominal power	1850 W ($\pm 5\%$)
Resistance	26.96-29.80 Ω
Thermal fuse	2 – sided

Checking of component :

Check the resistance value on the component with multimeter as shown in Figure 12.

Resistance value should be between 25- 30 Ohm.



Figure 12. Checking the component

VALVE

Valve is an electrical and mechanical component which is designed to take water from the network system into the washine machine. It is operated by PCB card.

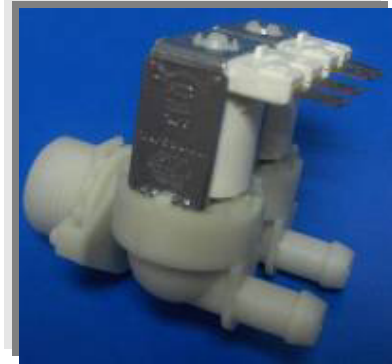


Figure 13. Valve

Technical features :

Nominal voltage	220 – 240 V
Nominal power	8 VA
Frequency	50 Hz
Rated flow:	6 l/min (±15%) (for cold inlet) 5.5 l/min (±15%) (for hot inlet)
Operating water pressure	0.2 – 10 bar

Checking of component :

Check the resistance value on the component with multimeter as shown in Figure 14.

Valve water flow rate should be between 6 - 8 lt/min.

Each valve bobbin resistance values should be between 3 - 4.5 k Ω .



Figure 14. Checking the component

MOTOR

The washing machine has an asynchronous motor. It is controlled by the PCB.

It is essential to check the motor for correct diagnosis and quick servicing. In the below picture, socket points on the motor is shown to measure with multimeter.



Figure 15. Motor

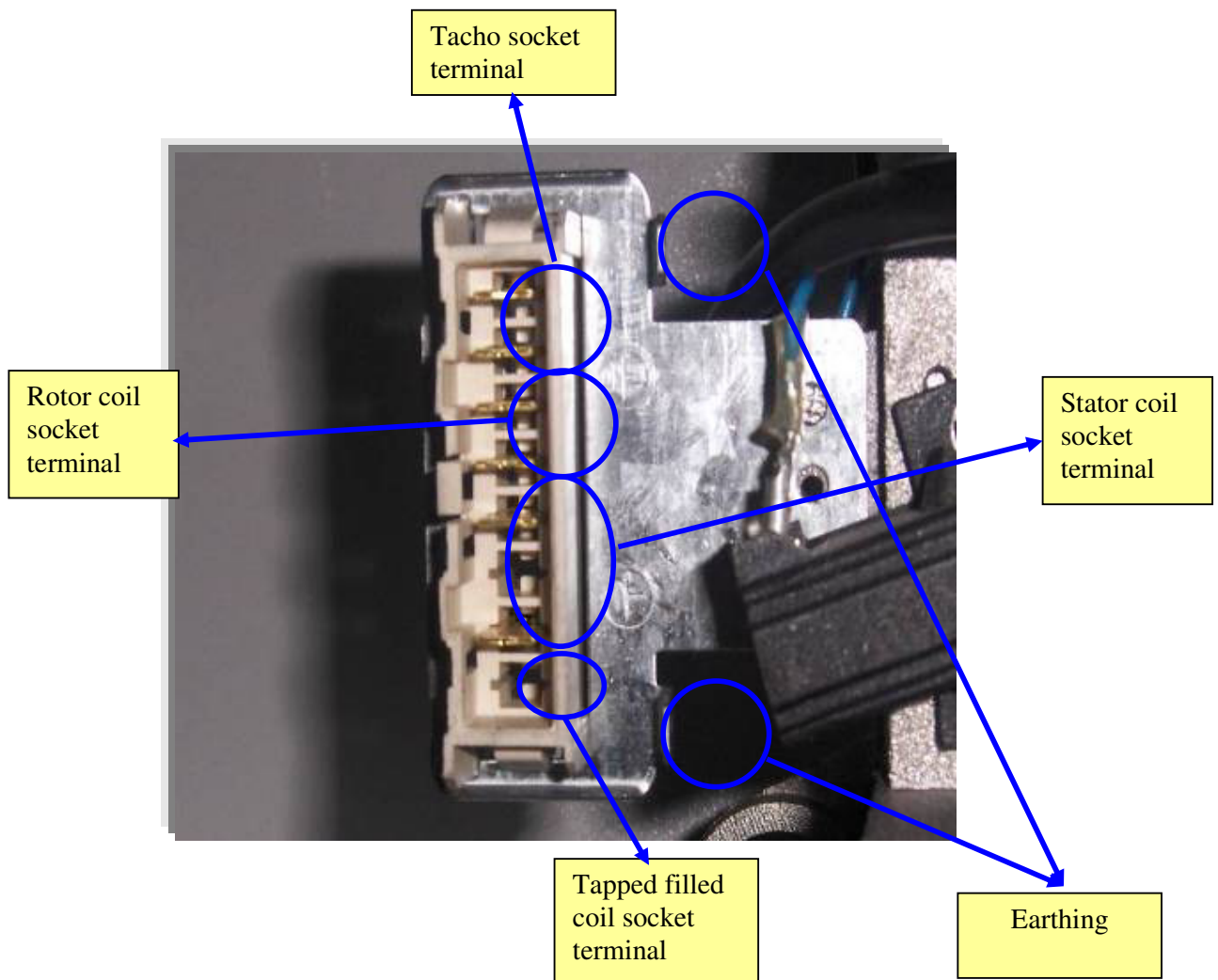


Figure 16. Motor socket terminals

Tacho and stator (full field-half field) ohm resistance values for the motor types are listed in the below table.

MOTOR CODE	SUPPLIER	STATOR (FULL FIELD) (ohm)	TACHO (ohm)	STATOR (HALF FIELD) (ohm)	TEMPERATURE
30027193	ANAIMEP	1.87-/+7%	180 -/+10%		20 °C
30023397	ANAIMEP	1.75-/+7%	180 -/+10%		20 °C
32002064	ANAIMEP	2.01-/+7%	180 -/+7%		20 °C
32003425	ANAIMEP	2.01-/+7%	180 -/+7%		20 °C
32000536	CESET	1.01 -/+7%	68.7-/+7%		20 °C
32000271	CESET	1.40 -/+7%	68.7-/+7%	0.56 -/+7%	20 °C
32000535	CESET	1.24 -/+7%	68.7-/+7%		20 °C
32000537	CESET	1.34 -/+7%	68.7-/+7%	0.56 -/+7%	20 °C
32002064	WELLING	2.08 -/+7%	66.6 -/+7%		20 °C
32003425	WELLING	1.59 -/+7%	66.6 -/+7%		20 °C
32004572	ACC	1.20 -/+7%	184 -/+10%	0.60 -/+7%	20 °C
32004968	ATB	1.63-/+7%	90 -/+12%		20 °C
32004969	ATB	1.57-/+7%	90 -/+12%	0.80 -/+7%	20 °C
32004970	ATB	1.57-/+7%	90 -/+12%		20 °C

Table 2. Resistance values for the motor types

Tacho resistance control

Check the motor tacho terminals on the motor socket with multimeter as shown in the picture. For resistance values, refer to the table 1.



Stator Full Field Resistance Control

Check the motor stator terminals on the motor socket with multimeter as shown in the picture. For resistance values, refer to the table 1.



Stator Half Field Resistance Control

Check the motor stator terminals on the motor socket with multimeter as shown in the picture. For resistance values, refer to the table 1.



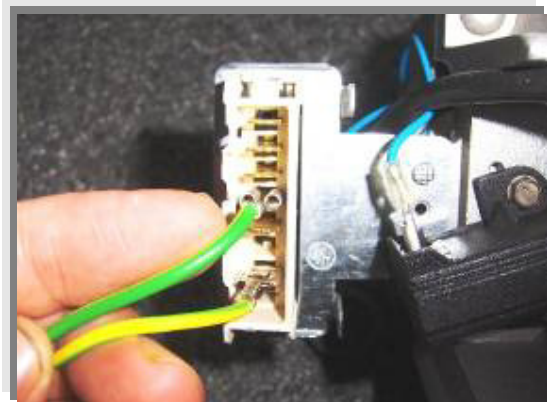
Operating the motor manually

In order to check the motor operation, it is operated manually by supplying input electricity. The motor operation should be checked by supplying energy for a short time. In the below pictures, the checking operation is demonstrated.

Connect the rotor coil terminal and stator coil terminal with a conductive wire.



- W Tf-

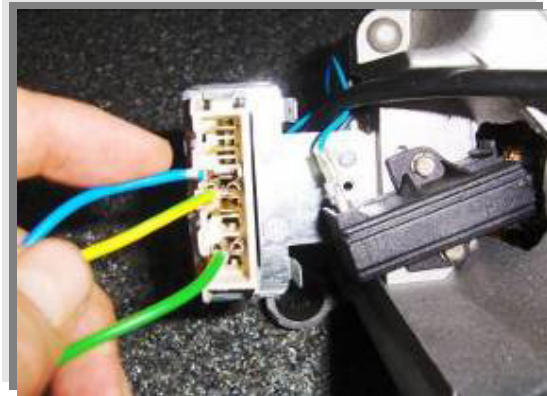


-W0 Tf-

Connect one of the wires on the power cable with other rotor coil terminal.



-W Tf-

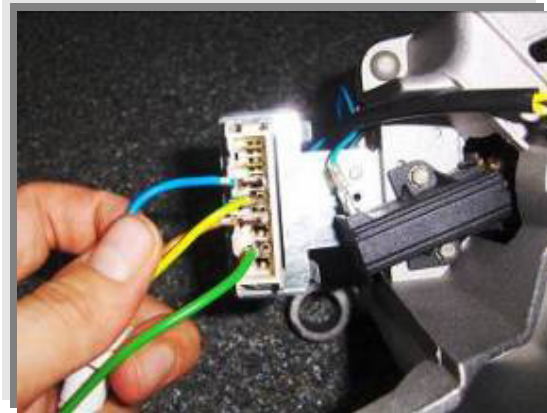


-W0 Tf-

Connect the other wire on the power cable with other stator coil terminal.

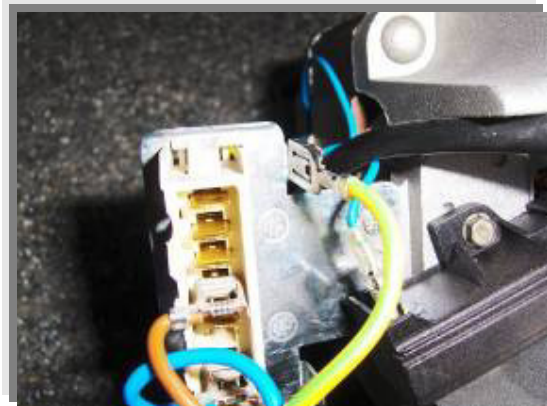


-W Tf-



-W0 Tf-

Note: The motor must be earthed by the earth cable as shown in the picture.



Plug the power cable. (220 V 50 Hz). After checking the motor operation, unplug the power cable soonest.

(Please do not plug the power cable more than 15 seconds.)



ELECTRONIC CARD

Electronic card (PCB) is the control department of the washing machine. PCB gets and sends signals to electrical components. All the program software is loaded in PCB.

